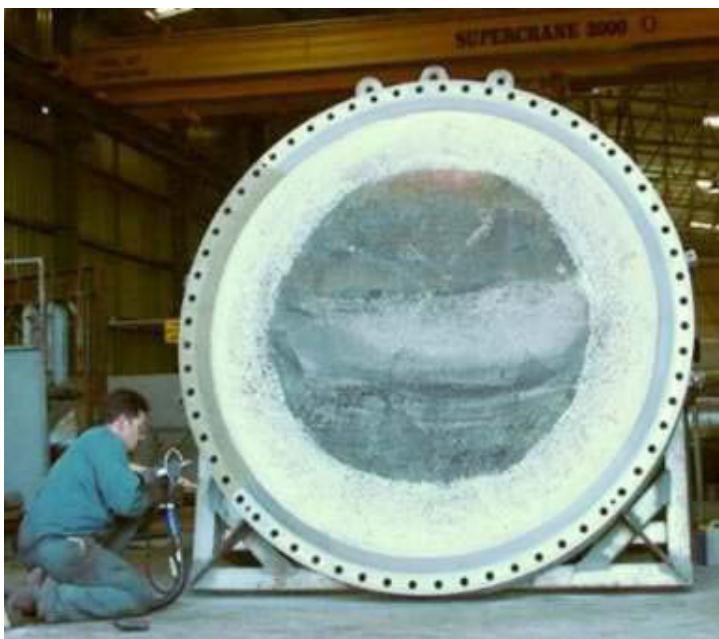
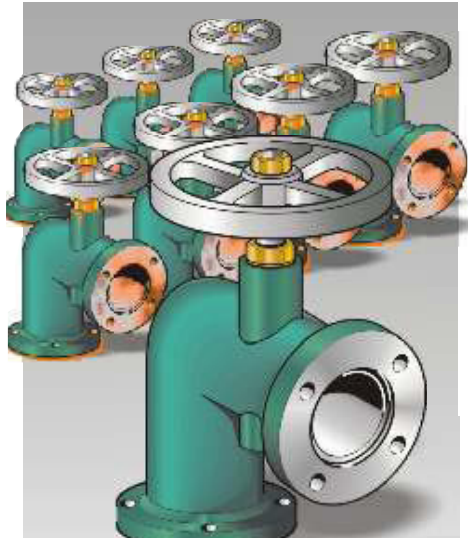


PROTECTING STORED COMPONENTS

Machinery and components are often stored for some time before use, whether they are waiting to be installed, on stand-by or surplus to immediate requirements. In the latter case it may be many years before a need arises and, when the need does arise, corrosion frequently makes them unserviceable.

Even when stored for a short time and under cover, fresh machined valve faces, for example, can soon rust and require maintenance before use, or may be subject to impact damage. The use of Enviropeel on vulnerable areas or complete systems ensures that when a component is needed it is instantly ready for use as the images on this and following pages demonstrate. The large manway, from BHP in Western Australia, shown below costs US\$40,000 to machine and resurface if damaged - a not infrequent occurrence before the advent of Enviropeel. The pictures on the right show the coating of machined surfaces - and how effective the Enviropeel protection can be.





The pictures on this page show, **Above**, a series of large valves and **Left**, stored drums from the mining industry. The valves first had the machined surfaces coated with Enviropel before being boxed and palletted for storage. The bearings on the drums were subject to constant failure before the use of Enviropel - Now, no matter how long before they are used, they are always in perfect condition, despite the extremes of temperature and humidity in which they are stored.



Contact: Offshore Technoogy Solutions Ltd. 106 Western Main Rd. Chaguaramas, Trinidad, West Indies
Telephone (1) 868 634 - 2214 -- 2216 Fax: (1) 868 634 - 4449 Email: info@otsl.biz www.otsl.biz



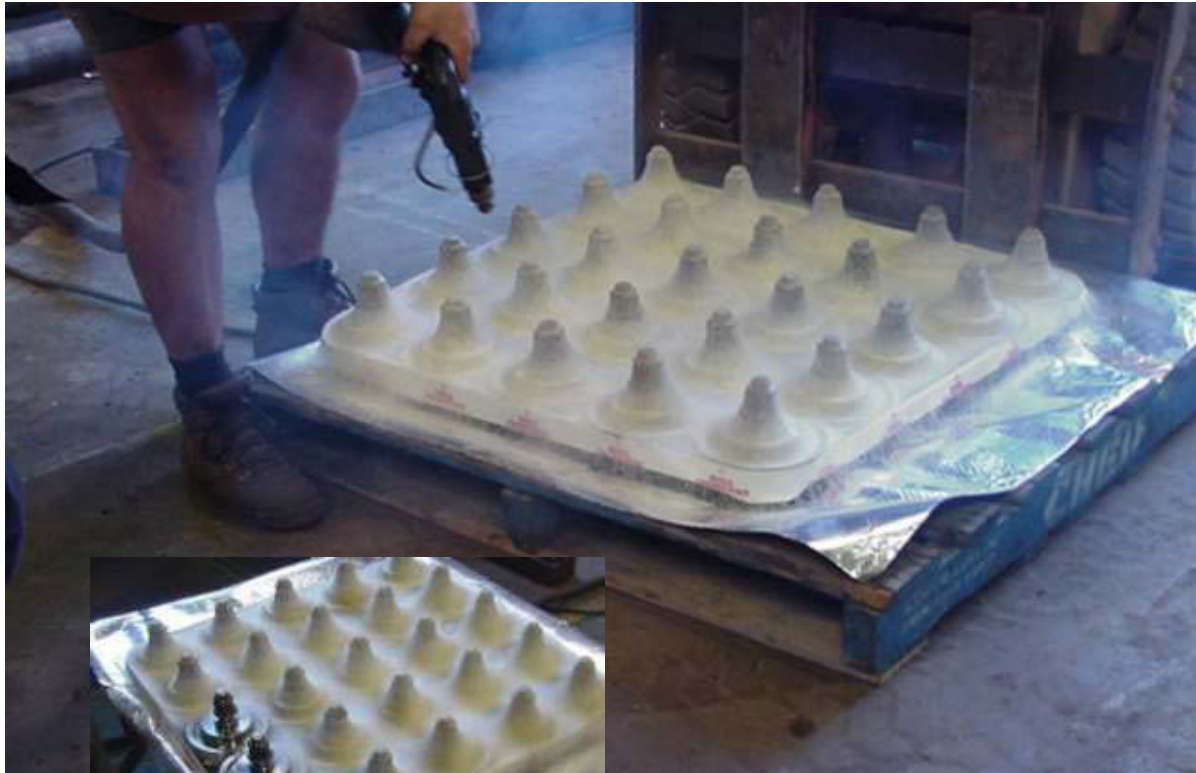
All the images on these pages are taken from Enviropeel applications in Western Australia, where machinery is subject to very harsh conditions in a remote environment and the ability to keep equipment fully functional is vital.



With a vast range of rotating equipment of all sizes, cooling fans, drums and pumps, BHP use Enviropeel to protect the entire bearing housing because it does not need to be removed for use. But, if removal is required, it only takes a few seconds, as the picture on the right shows - with the bearing emerging as good as new!



Contact: Offshore Technoogy Solutions Ltd. 106 Western Main Rd. Chaguaramas, Trinidad, West Indies
Telephone (1) 868 634 - 2214 -- 2216 Fax: (1) 868 634 - 4449 Email: info@otsl.biz www.otsl.biz



Unique to Enviropeel is the ability to protect a number of components easily and quickly, yet retaining individual access - as shown above and left.

ENVIROPEEL



Enviropeel is suitable for the protection of components, large or small, with the ability to vary the application type to suit the requirement - short or long term, transit and abrasion as well as anti-corrosion. All without waste or any threat to the environment.



Contact: Offshore Technoogy Solutions Ltd. 106 Western Main Rd. Chaguaramas, Trinidad, West Indies
 Telephone (1) 868 634 - 2214 -- 2216 Fax: (1) 868 634 - 4449 Email: info@otsl.biz www.otsl.biz